



NUEDEXTA Safety & Efficacy

Pocket Guide

NUEDEXTA[®]

(dextromethorphan HBr and $\frac{20}{10}$ mg
quinidine sulfate) capsules

NUEDEXTA, the first and only FDA-approved treatment for PBA, is clinically proven to reduce PBA episodes.^{1-3,8}

Indication and Usage

NUEDEXTA® (dextromethorphan HBr and quinidine sulfate) is indicated for the treatment of pseudobulbar affect (PBA).

PBA occurs secondary to a variety of otherwise unrelated neurologic conditions, and is characterized by involuntary, sudden, and frequent episodes of laughing and/or crying. PBA episodes typically occur out of proportion or incongruent to the underlying emotional state.

PBA is a specific condition, distinct from other types of emotional lability that may occur in patients with neurologic disease or injury.

PBA treatment can make a difference.

“After treatment with NUEDEXTA, I could tell it was working because I was having fewer episodes. When starting NUEDEXTA, I would tell others to give it time and be patient, because it’s worth it.”

— Carol, patient with Traumatic Brain Injury and PBA, taking NUEDEXTA



Adverse events with NUEDEXTA were mild to moderate and generally consistent across studies.^{2,8}

Pivotal Trial* Common Adverse Effects ^{1,2}			PRISM II Study* Common Adverse Effects ⁸	
	NUEDEXTA (n=107)	Placebo (n=109)	Effect (n=367)	n(%)
Diarrhea	13%	6%	Diarrhea	20 (5.4%)
Dizziness	10%	5%	Headache	15 (4.1%)

*SEE BACK FOR TRIAL AND STUDY DETAILS

These are not all the interactions and risks from use of NUEDEXTA. Please see the Important Safety Information throughout and the accompanying Full Prescribing Information.

IMPORTANT SAFETY INFORMATION

CONTRAINDICATIONS

Quinidine and Related Drugs: NUEDEXTA contains quinidine, and should not be used concomitantly with other drugs containing quinidine, quinine, or mefloquine.

Hypersensitivity: NUEDEXTA is contraindicated in patients with a history of NUEDEXTA-, quinine-, mefloquine-, or quinidine-induced thrombocytopenia, hepatitis, bone-marrow depression, lupus-like syndrome, or known hypersensitivity to dextromethorphan (eg, rash, hives).

IN THE PRISM II STUDY:⁸

57.5%
of patients who were
diagnosed with PBA (n=367)
had comorbid depression.

48.5%
were being treated with
concomitant antidepressants
at baseline.

Is your patient also being treated for depression?

NUEDEXTA should not be taken with monoamine oxidase inhibitors (MAOIs) or by patients who have taken MAOIs in the last 14 days.¹

While NUEDEXTA may be taken with some selective serotonin reuptake inhibitors or tricyclic antidepressants, it increases the risk for serotonin syndrome.¹

NUEDEXTA is not classified as an antipsychotic.⁹

IMPORTANT SAFETY INFORMATION (continued)

MAOIs: NUEDEXTA is contraindicated in patients taking monoamine oxidase inhibitors (MAOIs), or in patients who have taken MAOIs within the preceding 14 days, due to the risk of serious and possibly fatal drug interactions, including serotonin syndrome. Allow at least 14 days after stopping NUEDEXTA before starting an MAOI.

Cardiovascular: NUEDEXTA is contraindicated in patients with a prolonged QT interval, congenital long QT syndrome, history suggestive of torsades de pointes, heart failure, patients receiving drugs that both prolong QT interval and are metabolized by CYP2D6 (eg, thioridazine and pimozide), patients with complete atrioventricular (AV) block without implanted pacemaker, or at high risk of complete AV block.

NUEDEXTA can help reduce PBA episodes after 90 days.^{1-3,8}

THE PIVOTAL TRIAL*

NUEDEXTA **significantly reduced** PBA episode rates compared with the placebo in patients with ALS or MS.^{1,2}

Week 12

3.9

fewer
episodes

After taking NUEDEXTA, the average daily PBA episode rate for the treatment group dropped by 3.9 episodes (from 6.8 at baseline) compared to a 3.0 reduction (from 4.5 at baseline) for the placebo group (P=.005).^{1,2}

THE PRISM II OPEN-LABEL STUDY*

NUEDEXTA **reduced PBA symptoms** in patients with stroke, dementia, or TBI.⁸

Week 12

7.7

point
decrease

At Day 90/final visit, patients' mean CNS-LS score **decreased by 7.7 points from 20.4 at baseline (P<0.001).**⁸

PIVOTAL TRIAL POST HOC ANALYSIS:
MEAN WEEKLY EPISODE DECREASE (%) FROM BASELINE³

Week 1

44%

fewer
episodes

Week 4

70%

fewer
episodes

Week 12

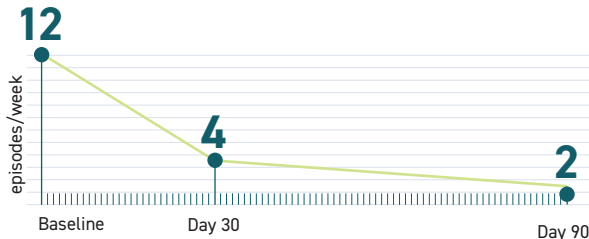
82%

fewer
episodes

Patients received NUEDEXTA QD in Week 1 and Q12H starting at Day 8.

* SEE BACK FOR PIVOTAL TRIAL DETAILS

SECONDARY ENDPOINT: MEDIAN CHANGE IN
NUMBER OF PBA EPISODES/WEEK BASELINE⁸



* SEE BACK FOR PRISM II STUDY DETAILS

PLEASE SEE IMPORTANT SAFETY INFORMATION THROUGHOUT AND THE ACCOMPANYING FULL PRESCRIBING INFORMATION.

IN NUEDEXTA'S PIVOTAL TRIAL:

51%

of patients
achieved complete
episode remission

**COMPLETE EPISODE REMISSION WAS
ACHIEVED BY 51% ON NUEDEXTA VS.
29% ON THE PLACEBO (P<0.005).²**

Remission was a secondary outcome, defined as the absence of PBA episodes during the patient's final 14 days of participation in the 12-week study.

IMPORTANT SAFETY INFORMATION (continued)

WARNINGS AND PRECAUTIONS

Thrombocytopenia and Other Hypersensitivity Reactions: Quinidine can cause immune-mediated thrombocytopenia that can be severe or fatal. Non-specific symptoms, such as lightheadedness, chills, fever, nausea, and vomiting, can precede or occur with thrombocytopenia. NUEDEXTA should be discontinued immediately if thrombocytopenia occurs.

Hepatotoxicity: Hepatitis, including granulomatous hepatitis, has been reported in patients receiving quinidine, generally during the first few weeks of therapy. Discontinue immediately if this occurs.

Cardiac Effects: NUEDEXTA causes dose-dependent QTc prolongation. QT prolongation can cause torsades de pointes-type ventricular tachycardia, with the risk increasing as the degree of prolongation increases. When initiating NUEDEXTA in patients at risk for QT prolongation and torsades de pointes, electrocardiographic (ECG) evaluation of QT interval should be conducted at baseline and 3 to 4 hours after the first dose. Some risk factors include use with CYP3A4 inhibitors or drugs that prolong QT interval, electrolyte abnormalities, bradycardia, or left ventricular hypertrophy or dysfunction. If patients taking NUEDEXTA experience symptoms that could indicate the occurrence of cardiac arrhythmias (eg, syncope or palpitations), NUEDEXTA should be discontinued, and the patient further evaluated.

Concomitant Use of CYP2D6 Substrates: NUEDEXTA inhibits CYP2D6 and may interact with other drugs metabolized by CYP2D6. Adjust dose of CYP2D6 substrates as needed.

Learn more at NUEDEXTAHCP.com

PIVOTAL TRIAL DESCRIPTION:² The pivotal trial was a 12-week, randomized, placebo-controlled study in 326 patients with amyotrophic lateral sclerosis (ALS) (n=197) or multiple sclerosis (MS) (n=129) and clinically significant Pseudobulbar Affect (PBA). Patients received NUEDEXTA (n=107), placebo (n=109), or dextromethorphan 30 mg/quinidine 10 mg (n=110 [unapproved dose, not shown]) twice daily (once daily in Week 1). Mean weekly episode rate reduction was a post hoc analysis of the primary endpoint.

PRISM II STUDY DESCRIPTION:⁴⁻⁸ PRISM II was a 90-day, open-label, single-arm, 74-site, U.S. trial in adult patients with dementia, stroke, or traumatic brain injury (TBI) (n=367). All patients received a clinical diagnosis of Pseudobulbar Affect (PBA) and had a Center for Neurologic Study-Labelity Scale (CNS-LS) score ≥ 13 at baseline. CNS-LS is a 7-item self-report rating scale that measures perceived frequency and control over laughing and/or crying episodes. Participants received 1 capsule of NUEDEXTA QD during Week 1 and were titrated to 1 capsule Q12H for Weeks 2 through 12. For the secondary endpoint, median episode count is depicted as it is resistant to outliers, unlike the mean.

EFFECTIVENESS POPULATION: Dementia patients: Baseline n=108, Day 30 n=108, Day 90 n=102; stroke patients: Baseline n=103, Day 30 n=103, Day 90 n=92; traumatic brain injury (TBI) patients: Baseline n=87, Day 30 n=86, Day 90 n=67; and overall: Baseline n=298, Day 30 n=297, Day 90 n=261. 70.8% (n=260) of patients were on psychopharmacologic medications. 20.4% (n=75) of participants were age 75 or older.

References: 1. NUEDEXTA [package insert]. Aliso Viejo, CA: Avanir Pharmaceuticals, Inc. 2. Piroo EP, Brooks BR, Cummings J, et al. Dextromethorphan plus ultra-low quinidine reduces pseudobulbar affect. *Ann Neurol*. 2010;68(5):693-702. 3. Data on file. Avanir Pharmaceuticals, Inc. 4. Brooks BR, Crumpacker D, Fellus J, Kantor D, Kaye RE. PRISM: a novel research tool to assess the prevalence of pseudobulbar affect symptoms across neurological conditions. *PLoS ONE*. 2013;8(8):e72232. 5. Moore SR, Gresham LS, Bromberg MB, Kasarkis EJ, Smith RA. A self report measure of affective lability. *J Neurol Neurosurg Psychiatry*. 1997;63(1):89-93. 6. Smith RA, Berg JE, Pope LE, Callahan JD, Wynn D, Thisted RA. Validation of the CNS emotional lability scale for pseudobulbar affect (pathological laughing and crying) in multiple sclerosis patients. *Mult Scler*. 2004;10(6):679-685. 7. Smith RA, Berg JE, Pope LE, Thisted RA. Measuring pseudobulbar affect in ALS. *Amyotroph Lateral Scler Other Motor Neuron Disord*. 2004;5(suppl 1):99-102. 8. Hammond FM, Alexander DN, Cutler AJ, et al. PRISM II: an open-label study to assess effectiveness of dextromethorphan/quinidine for pseudobulbar affect in patients with dementia, stroke or traumatic brain injury. *BMC Neurol*. 2016;16:89. 9. The United States Pharmacopeia (USP). USP Medicare model guidelines v8.0. <https://www.usp.org/health-quality-safety/usp-medicare-model-guidelines>. Updated February 1, 2020. Accessed June 21, 2021.

©2021 Avanir Pharmaceuticals, Inc. All rights reserved. AVANIR, NUEDEXTA, and Avanir/NUEDEXTA logos are trademarks or registered trademarks of Avanir Pharmaceuticals, Inc. in the United States or other countries. MLR-NUE-US-1596-1021



HIGHLIGHTS OF PRESCRIBING INFORMATION

These highlights do not include all the information needed to use NUEDEXTA safely and effectively. See full prescribing information for NUEDEXTA.

NUEDEXTA (dextromethorphan hydrobromide and quinidine sulfate) capsules, for oral use
Initial U.S. Approval: 2010

INDICATIONS AND USAGE

NUEDEXTA is a combination product containing dextromethorphan hydrobromide (an uncompetitive NMDA receptor antagonist and sigma-1 agonist) and quinidine sulfate (a CYP450 2D6 inhibitor) indicated for the treatment of pseudobulbar affect (PBA). (1)

DOSAGE AND ADMINISTRATION

- Starting dose: one capsule daily by mouth for 7 days. (2.1)
- Maintenance dose: After 7 days, 1 capsule every 12 hours. (2.1)

DOSAGE FORMS AND STRENGTHS

Capsules: Dextromethorphan hydrobromide 20 mg/quinidine sulfate 10 mg. (3)

CONTRAINDICATIONS

- Concomitant use with quinidine, quinine, or mefloquine. (4.1)
- Patients with a history of quinidine, quinine or mefloquine-induced thrombocytopenia, hepatitis, or other hypersensitivity reactions. (4.2)
- Patients with known hypersensitivity to dextromethorphan. (4.2)
- Use with an MAOI or within 14 days of stopping an MAOI. Allow 14 days after stopping NUEDEXTA before starting an MAOI. (4.3)
- Prolonged QT interval, congenital long QT syndrome, history suggestive of torsades de pointes, or heart failure. (4.4)
- Complete atrioventricular (AV) block without implanted pacemaker, or patients at high risk of complete AV block. (4.4)
- Concomitant use with drugs that both prolong QT interval and are metabolized by CYP2D6 (e.g., thioridazine or pimozone). (4.4)

WARNINGS AND PRECAUTIONS

- Thrombocytopenia or other hypersensitivity reactions: Discontinue if occurs. (5.1)
- Hepatitis: Discontinue if occurs. (5.2)
- QT Prolongation: Monitor ECG if concomitant use of drugs that prolong QT interval cannot be avoided or if concomitant CYP3A4 inhibitors used. (5.3)

- Left ventricular hypertrophy (LVH) or left ventricular dysfunction (LVD): Monitor ECG in patients with LVH or LVD. (5.3)
- CYP2D6 substrate: Nuedexta inhibits CYP2D6. Accumulation of parent drug and/or failure of metabolite formation may decrease safety and/or efficacy of concomitant CYP2D6 metabolized drugs. Adjust dose of CYP2D6 substrate or use alternative treatment when clinically indicated. (5.4, 12.4)
- Dizziness: Take precautions to reduce falls. (5.5)
- Serotonin syndrome: Use of NUEDEXTA with selective serotonin reuptake inhibitor (SSRIs) or tricyclic antidepressants increases the risk. Discontinue if occurs. (5.6, 7.4)
- Anticholinergic effects of quinidine: Monitor for worsening in myasthenia gravis and other sensitive conditions. (5.7)

ADVERSE REACTIONS

The most common adverse reactions (incidence of $\geq 3\%$ and two-fold greater than placebo) in patients taking NUEDEXTA are diarrhea, dizziness, cough, vomiting, asthenia, peripheral edema, urinary tract infection, influenza, increased gamma-glutamyltransferase, and flatulence. (6.1)

To report SUSPECTED ADVERSE REACTIONS, contact Avanir Pharmaceuticals, Inc. at 1-855-4NUEDEX (468-3339) or FDA at 1-800-FDA-1088 or www.fda.gov/medwatch.

DRUG INTERACTIONS

- Desipramine: Exposure increases 8-fold. Reduce desipramine dose and adjust based on clinical response. (7.5, 12.4)
- Paroxetine: Exposure increases 2-fold. Reduce paroxetine dose and adjust based on clinical response. (7.5, 12.4)
- Digoxin: Increased digoxin substrate plasma concentration may occur. (7.6)

USE IN SPECIFIC POPULATIONS

- Pregnancy: Based on animal data, may cause fetal harm. (8.1)

See 17 for PATIENT COUNSELING INFORMATION

Revised: 06/2019

FULL PRESCRIBING INFORMATION: CONTENTS*

1 INDICATIONS AND USAGE

2 DOSAGE AND ADMINISTRATION

2.1 Recommended Dose

3 DOSAGE FORMS AND STRENGTHS

4 CONTRAINDICATIONS

4.1 Quinidine and Related Drugs

4.2 Hypersensitivity

4.3 MAOIs

4.4 Cardiovascular

5 WARNINGS AND PRECAUTIONS

5.1 Thrombocytopenia and Other Hypersensitivity Reactions

5.2 Hepatotoxicity

5.3 Cardiac Effects

5.4 Concomitant use of CYP2D6 Substrates

5.5 Dizziness

5.6 Serotonin Syndrome

5.7 Anticholinergic Effects of Quinidine

5.8 CYP2D6 Poor Metabolizers

6 ADVERSE REACTIONS

6.1 Clinical Trials Experience

6.2 Long-Term Exposure with NUEDEXTA

6.3 Safety Experience of Individual Components

7 DRUG INTERACTIONS

7.1 MAOIs

7.2 Drugs that Prolong QT and are Metabolized by CYP2D6

7.3 Drugs that Prolong QT and Concomitant CYP3A4 Inhibitors

7.4 SSRIs and Tricyclic Antidepressants

7.5 CYP2D6 Substrate

7.6 Digoxin

7.7 Alcohol

8 USE IN SPECIFIC POPULATIONS

8.1 Pregnancy

8.2 Lactation

8.4 Pediatric Use

8.5 Geriatric Use

8.6 Renal Impairment

8.7 Hepatic Impairment

9 DRUG ABUSE AND DEPENDENCE

10 OVERDOSAGE

10.1 Treatment of Overdose

11 DESCRIPTION

12 CLINICAL PHARMACOLOGY

12.1 Mechanism of Action

12.2 Pharmacodynamics

12.3 Pharmacokinetics

12.4 Drug-Drug Interactions

12.5 Pharmacogenomics

13 NONCLINICAL TOXICOLOGY

13.1 Carcinogenesis, Mutagenesis, Impairment of Fertility

14 CLINICAL STUDIES

16 HOW SUPPLIED/STORAGE AND HANDLING

17 PATIENT COUNSELING INFORMATION

*Sections or subsections omitted from the full prescribing information are not listed.

FULL PRESCRIBING INFORMATION

1 INDICATIONS AND USAGE

NUEDEXTA is indicated for the treatment of pseudobulbar affect (PBA).

PBA occurs secondary to a variety of otherwise unrelated neurologic conditions, and is characterized by involuntary, sudden, and frequent episodes of laughing and/or crying. PBA episodes typically occur out of proportion or incongruent to the underlying emotional state. PBA is a specific condition, distinct from other types of emotional lability that may occur in patients with neurological disease or injury.

2 DOSAGE AND ADMINISTRATION

2.1 Recommended Dose

The recommended starting dose of NUEDEXTA is one capsule daily by mouth for the initial seven days of therapy. On the eighth day of therapy and thereafter, the daily dose should be a total of two capsules a day, given as one capsule every 12 hours.

The need for continued treatment should be reassessed periodically, as spontaneous improvement of PBA occurs in some patients.

3 DOSAGE FORMS AND STRENGTHS

NUEDEXTA capsules contain 20 mg dextromethorphan hydrobromide and 10 mg quinidine sulfate in a brick red gelatin capsule with “DMQ 20-10” printed in white ink on the capsule.

4 CONTRAINDICATIONS

4.1 Quinidine and Related Drugs

NUEDEXTA contains quinidine and should not be used concomitantly with other drugs containing quinidine, quinine, or mefloquine.

4.2 Hypersensitivity

NUEDEXTA is contraindicated in patients with a history of NUEDEXTA, quinine, mefloquine or quinidine-induced thrombocytopenia, hepatitis, bone marrow depression or lupus-like syndrome. NUEDEXTA is also contraindicated in patients with a known hypersensitivity to dextromethorphan (e.g. rash, hives) [*see Warnings and Precautions (5.1)*].

4.3 MAOIs

NUEDEXTA is contraindicated in patients taking monoamine oxidase inhibitors (MAOIs) or in patients who have taken MAOIs within the preceding 14 days, due to the risk of serious and possibly fatal drug interactions, including serotonin syndrome. Allow at least 14 days after stopping NUEDEXTA before starting an MAOI [*see Drug Interactions (7.1)*].

4.4 Cardiovascular

NUEDEXTA is contraindicated in patients with a prolonged QT interval, congenital long QT syndrome or a history suggestive of torsades de pointes, and in patients with heart failure [*see Warnings and Precautions (5.3)*].

NUEDEXTA is contraindicated in patients receiving drugs that both prolong QT interval and are metabolized by CYP2D6 (e.g., thioridazine and pimozide), as effects on QT interval may be increased [see *Drug Interactions (7.2)*].

NUEDEXTA is contraindicated in patients with complete atrioventricular (AV) block without implanted pacemakers, or in patients who are at high risk of complete AV block.

5 WARNINGS AND PRECAUTIONS

5.1 Thrombocytopenia and Other Hypersensitivity Reactions

Quinidine can cause immune-mediated thrombocytopenia that can be severe or fatal. Non-specific symptoms, such as lightheadedness, chills, fever, nausea, and vomiting, can precede or occur with thrombocytopenia. NUEDEXTA should be discontinued immediately if thrombocytopenia occurs, unless the thrombocytopenia is clearly not drug-related, as continued use increases the risk for fatal hemorrhage. Likewise, NUEDEXTA should not be restarted in sensitized patients, because more rapid and more severe thrombocytopenia than the original episode can occur. NUEDEXTA should not be used if immune-mediated thrombocytopenia from structurally related drugs, including quinine and mefloquine is suspected, as cross-sensitivity can occur. Quinidine-associated thrombocytopenia usually, but not always, resolves within a few days of discontinuation of the sensitizing drug.

Quinidine has also been associated with a lupus-like syndrome involving polyarthritis, sometimes with a positive antinuclear antibody test. Other associations include rash, bronchospasm, lymphadenopathy, hemolytic anemia, vasculitis, uveitis, angioedema, agranulocytosis, the sicca syndrome, myalgia, elevation in serum levels of skeletal-muscle enzymes, and pneumonitis.

5.2 Hepatotoxicity

Hepatitis, including granulomatous hepatitis, has been reported in patients receiving quinidine, generally during the first few weeks of therapy. Fever may be a presenting symptom, and thrombocytopenia or other signs of hypersensitivity may also occur. Most cases remit when quinidine is withdrawn.

5.3 Cardiac Effects

NUEDEXTA causes dose-dependent QTc prolongation [see *Clinical Pharmacology (12.2)*]. QT prolongation can cause torsades de pointes-type ventricular tachycardia, with the risk increasing as the degree of prolongation increases. When initiating NUEDEXTA in patients at risk of QT prolongation and torsades de pointes, electrocardiographic (ECG) evaluation of QT interval should be conducted at baseline and 3-4 hours after the first dose. This includes patients concomitantly taking/initiating drugs that prolong the QT interval or that are strong or moderate CYP3A4 inhibitors, and patients with left ventricular hypertrophy (LVH) or left ventricular dysfunction (LVD). LVH and LVD are more likely to be present in patients with chronic hypertension, known coronary artery disease, or history of stroke. LVH and LVD can be diagnosed utilizing echocardiography or another suitable cardiac imaging modality.

Strong and moderate CYP3A inhibitors include, but are not limited to, atazanavir, clarithromycin, indinavir, itraconazole, ketoconazole, nefazodone, nelfinavir, ritonavir, saquinavir, telithromycin, amprenavir, aprepitant, diltiazem, erythromycin, fluconazole, fosamprenavir, grapefruit juice, and verapamil.

Reevaluate ECG if risk factors for arrhythmia change during the course of treatment with NUEDEXTA. Risk factors include concomitant use of drugs associated with QT prolongation, electrolyte abnormality (hypokalemia, hypomagnesemia), bradycardia, and family history of QT abnormality. Hypokalemia and

hypomagnesemia should be corrected prior to initiation of therapy with NUEDEXTA, and should be monitored during treatment.

If patients taking NUEDEXTA experience symptoms that could indicate the occurrence of cardiac arrhythmias, e.g., syncope or palpitations, NUEDEXTA should be discontinued and the patient further evaluated.

5.4 Concomitant use of CYP2D6 Substrates

The quinidine in NUEDEXTA inhibits CYP2D6 in patients in whom CYP2D6 is not otherwise genetically absent or its activity otherwise pharmacologically inhibited [see *Warnings and Precautions* (5.8) and *Clinical Pharmacology* (12.3), (12.5)]. Because of this effect on CYP2D6, accumulation of parent drug and/or failure of active metabolite formation may decrease the safety and/or the efficacy of drugs used concomitantly with NUEDEXTA that are metabolized by CYP2D6 [see *Drug Interactions* (7.5)].

5.5 Dizziness

NUEDEXTA may cause dizziness [see *Adverse Reactions* (6.1)]. Precautions to reduce the risk of falls should be taken, particularly for patients with motor impairment affecting gait or a history of falls. In a controlled trial of NUEDEXTA, 10% of patients on NUEDEXTA and 5% on placebo experienced dizziness.

5.6 Serotonin Syndrome

When used with SSRIs (such as fluoxetine) or tricyclic antidepressants (such as clomipramine and imipramine), NUEDEXTA may cause “serotonin syndrome”, with changes including altered mental status, hypertension, restlessness, myoclonus, hyperthermia, hyperreflexia, diaphoresis, shivering, and tremor [see *Drug Interactions* (7.4), *Overdosage* (10)].

5.7 Anticholinergic Effects of Quinidine

Monitor for worsening clinical condition in myasthenia gravis and other conditions that may be adversely affected by anticholinergic effects.

5.8 CYP2D6 Poor Metabolizers

The quinidine component of NUEDEXTA is intended to inhibit CYP2D6 so that higher exposure to dextromethorphan can be achieved compared to when dextromethorphan is given alone [see *Warnings and Precautions* (5.4) and *Clinical Pharmacology* (12.3), (12.5)]. Approximately 7-10% of Caucasians and 3-8% of African Americans lack the capacity to metabolize CYP2D6 substrates and are classified as poor metabolizers (PMs). The quinidine component of NUEDEXTA is not expected to contribute to the effectiveness of NUEDEXTA in PMs, but adverse events of the quinidine are still possible. In those patients who may be at risk of significant toxicity due to quinidine, genotyping to determine if they are PMs should be considered prior to making the decision to treat with NUEDEXTA.

6 ADVERSE REACTIONS

A total of 946 patients participated in four Phase 3 controlled and uncontrolled PBA studies and received at least one dose of the combination product of dextromethorphan/quinidine in various strengths at the recommended or higher than the recommended dose. Of those patients, 393 patients were exposed for at least 180 days and 294 patients were exposed for at least one year. Median exposure was 168 days.

Controlled trials enrolled only patients with either ALS or MS. Uncontrolled studies enrolled 136 patients with PBA secondary to a wide variety of underlying neurological conditions including stroke (45 patients) and traumatic brain injury (23 patients). Consequently, patients with other underlying neurologic diseases may experience other adverse reactions not described below.

6.1 Clinical Trials Experience

A 12-week, placebo-controlled study evaluated NUEDEXTA (dextromethorphan 20 mg/quinidine 10 mg) (N=107) and a 30 mg dextromethorphan/10 mg quinidine combination (N=110) compared to placebo (N=109). Approximately 60% of patients had ALS and 40% had MS. Patients were 25 to 80 years of age, with a mean age of approximately 51 years. Three (3) ALS patients in each drug treatment arm and 1 ALS patient in the placebo arm died during the 12-week placebo-control period. All deaths were consistent with the natural progression of ALS.

Adverse Reactions Leading to Discontinuation

The most commonly reported adverse reactions (incidence $\geq 2\%$ and greater than placebo) that led to discontinuation with the 20 mg dextromethorphan/10 mg quinidine twice daily dose were muscle spasticity (3%), respiratory failure (1%), abdominal pain (2%), asthenia (2%), dizziness (2%), fall (1%), and muscle spasms (2%).

Most Common Adverse Reactions

Adverse drug reactions that occurred in $\geq 3\%$ of patients receiving the 20 mg dextromethorphan/10 mg quinidine twice daily dose, and at an incidence of ≥ 2 times placebo in short-term clinical trials in ALS and MS are provided in Table 1. Because clinical trials are conducted under widely varying conditions, adverse reaction rates observed in the clinical trials of a drug cannot be directly compared to the rates in the clinical trials of another drug and may not reflect the rates observed in clinical practice.

Table 1: Adverse Drug Reactions with an Incidence of $\geq 3\%$ of Patients and $\geq 2x$ Placebo in NUEDEXTA-treated Patients by System-Organ Class and Preferred Term

	NUEDEXTA N=107 %	Placebo N=109 %
Diarrhea	13	6
Dizziness	10	5
Cough	5	2
Vomiting	5	1
Asthenia	5	2
Peripheral edema	5	1
Urinary tract infection	4	1
Influenza	4	1
Increased gamma-glutamyltransferase	3	0
Flatulence	3	1

6.2 Long-Term Exposure with NUEDEXTA

The experience in open-label clinical trials is consistent with the safety profile observed in the placebo-controlled clinical trials.

6.3 Safety Experience of Individual Components

The following adverse reactions have been reported with the use of the individual components of NUEDEXTA, dextromethorphan and quinidine, from post-marketing experience. Because these reactions are reported voluntarily from a population of unknown size, it is not always possible to reliably estimate their frequency or establish a causal relationship to drug exposure.

Dextromethorphan

Drowsiness, dizziness, nervousness or restlessness, nausea, vomiting, and stomach pain.

Quinidine

Cinchonism is most often a sign of chronic quinidine toxicity, but it may appear in sensitive patients after a single moderate dose of several hundred milligrams. Cinchonism is characterized by nausea, vomiting, diarrhea, headache tinnitus, hearing loss, vertigo, blurred vision, diplopia, photophobia, confusion, and delirium.

Convulsions, apprehension, and ataxia have been reported with quinidine therapy, but it is not clear that these were not simply the results of hypotension and consequent cerebral hypoperfusion in patients being treated for cardiovascular indications. Acute psychotic reactions have been reported to follow the first dose of quinidine, but these reactions appear to be extremely rare. Other adverse reactions occasionally reported with quinidine therapy include depression, mydriasis, disturbed color perception, night blindness, scotomata, optic neuritis, visual field loss, photosensitivity, keratopathy, and abnormalities of skin pigmentation.

7 DRUG INTERACTIONS

7.1 MAOIs

Do not use NUEDEXTA with monoamine oxidase inhibitors (MAOIs) or in patients who have taken MAOIs within the preceding 14 days [see *Contraindications (4.3)*].

7.2 Drugs that Prolong QT and are Metabolized by CYP2D6

Do not use with drugs that both prolong QT interval and are metabolized by CYP2D6 (e.g., thioridazine or pimozide) [see *Contraindications (4.4)*].

7.3 Drugs that Prolong QT and Concomitant CYP3A4 Inhibitors

Recommend ECG in patients taking drugs with NUEDEXTA that prolong the QT interval and in patients taking concomitant moderate or strong CYP3A4 inhibitors [see *Warnings and Precautions (5.3)*].

7.4 SSRIs and Tricyclic Antidepressants

Use of NUEDEXTA with SSRIs or tricyclic antidepressants increases the risk of ‘serotonin syndrome’ [see *Warnings and Precautions (5.6)*].

7.5 CYP2D6 Substrate

The co-administration of NUEDEXTA with drugs that undergo extensive CYP2D6 metabolism may result in altered drug effects, due to accumulation of parent drug and/or failure of metabolite formation [see *Warnings and Precautions (5.4)*]. Therapy with medications that are primarily metabolized by CYP2D6 and that have a relatively narrow therapeutic index should be initiated at a low dose if a patient is receiving NUEDEXTA concurrently. If NUEDEXTA is added to the treatment regimen of a patient already receiving a drug primarily metabolized by CYP2D6, the need for a dose modification of the original medication should be considered. The extent to which CYP2D6 interactions may pose clinical problems will depend on the pharmacokinetics of the substrate involved.

In cases of prodrugs whose actions are mediated by the CYP2D6-produced metabolites (for example, codeine and hydrocodone, whose analgesic and antitussive effects appear to be mediated by morphine and hydromorphone, respectively), it may not be possible to achieve the desired clinical benefits in the presence of NUEDEXTA due to quinidine-mediated inhibition of CYP2D6. Consider use of alternative treatment with NUEDEXTA when clinically indicated.

Drug interactions with desipramine and paroxetine have been studied in controlled clinical trials with a higher dose combination of dextromethorphan/quinidine (dextromethorphan 30 mg/quinidine 30 mg) than NUEDEXTA; study results are described below. No other drug interactions with CYP2D6 substrates have been systematically investigated, although concomitant use of such drugs was allowed in clinical trials with NUEDEXTA and in clinical trials with higher dose formulations of dextromethorphan/quinidine.

Desipramine (CYP2D6 substrate):

The tricyclic antidepressant desipramine is metabolized primarily by CYP2D6. A drug interaction study was conducted between a higher combination dose of dextromethorphan (dextromethorphan 30 mg/quinidine 30 mg) and desipramine 25 mg. The combination dose of dextromethorphan/quinidine increased steady state desipramine levels approximately 8-fold. If NUEDEXTA and desipramine are prescribed concomitantly, the initial dose of desipramine should be markedly reduced. The dose of desipramine can then be adjusted based on clinical response; however, a dose above 40 mg/day is not recommended.

Paroxetine (CYP2D6 inhibitor and substrate):

When the combination dose of dextromethorphan 30 mg/quinidine 30 mg was added to paroxetine at steady state, paroxetine exposure (AUC_{0-24}) increased by 1.7 fold and C_{max} increased by 1.5 fold. Consideration should be given to initiating treatment with a lower dose of paroxetine if given with NUEDEXTA. The dose of paroxetine can then be adjusted based on clinical response; however, dosage above 35 mg/day is not recommended.

7.6 Digoxin

Quinidine is an inhibitor of P-glycoprotein. Concomitant administration of quinidine with digoxin, a P-glycoprotein substrate, results in serum digoxin levels that may be as much as doubled. Plasma digoxin concentrations should be closely monitored in patients taking NUEDEXTA concomitantly, and the digoxin dose reduced, as necessary.

7.7 Alcohol

As with any other CNS drug, caution should be used when NUEDEXTA is taken in combination with other centrally acting drugs and alcohol.

8 USE IN SPECIFIC POPULATIONS

8.1 Pregnancy

Risk Summary

There are no adequate data on the developmental risk associated with the use of NUEDEXTA in pregnant women. In oral studies conducted in rats and rabbits, a combination of dextromethorphan/quinidine demonstrated developmental toxicity, including teratogenicity (rabbits) and embryoletality, when given to pregnant animals (*see Data*).

In the U.S. general population, the estimated background risk of major birth defects and miscarriage in clinically recognized pregnancies is 2-4% and 15-20%, respectively. The estimated background risk of major birth defects and miscarriage for the indicated population is unknown.

Data

Animal Data

When dextromethorphan/quinidine was administered orally (0/0, 5/100, 15/100, and 50/100 mg/kg/day) to pregnant rats during the period of organogenesis, embryo-fetal deaths were observed at the highest dose tested and reduced skeletal ossification was observed at all doses. The lowest dose tested (5/100 mg/kg/day) is approximately 1/50 times the recommended human dose (RHD) of 40/20 mg/day on a mg/m² basis. Oral administration to pregnant rabbits during organogenesis in two separate studies (0/0, 5/60, 15/60, and 30/60 mg/kg/day; 0/0, 5/100, 15/100, and 50/100 mg/kg/day) resulted in an increased incidence of fetal malformations at all but the lowest dose tested. The no-effect dose (5/100 mg/kg/day) is approximately 2/100 times the RHD on a mg/m² basis.

When dextromethorphan/quinidine was orally administered to female rats during pregnancy and lactation in two separate studies (0/0, 5/100, 15/100, and 30/100 mg/kg/day; 0/0, 5/100, 15/100, and 50/100 mg/kg/day), pup survival and pup weight were decreased at all doses, and developmental delay was observed in offspring at the mid and high doses. A no-effect dose for adverse developmental effects was not identified. The lowest dose tested (5/100 mg/kg/day) is approximately 1/50 times the RHD on a mg/m² basis.

When dextromethorphan/quinidine was orally administered (0/0, 5/50, 15/50, 25/50 mg/kg) to male and female rats on postnatal day (PND) 7, the highest dose resulted in neuronal death in brain (thalamus and medulla oblongata). PND 7 in rat corresponds to the third trimester of the gestation through the first several months of life but may extend to approximately three years of age in humans.

8.2 Lactation

Risk Summary

Quinidine is excreted in human milk. It is not known whether dextromethorphan is excreted in human milk. There are no data on the effects of quinidine or dextromethorphan on the breastfed infant or the effects on milk production. The development and health benefits of breastfeeding should be considered along with the mother's clinical need for NUEDEXTA and any potential adverse effects on the breastfed infant from NUEDEXTA or from the underlying material condition.

8.4 Pediatric Use

The safety and effectiveness in pediatric patients below the age of 18 have not been established.

8.5 Geriatric Use

Of the total number of patients with PBA in clinical studies of NUEDEXTA, 14 percent were 65 years old and over, while 2 percent were 75 and over. Clinical studies of NUEDEXTA did not include sufficient number of patients aged 65 and over to determine whether they respond differently than younger patients. In general, dose selection for an elderly patient should be cautious, usually starting at the low end of the dosing range, reflecting the greater frequency of decreased hepatic, renal, or cardiac function, and of concomitant disease or other drug therapy.

8.6 Renal Impairment

Dose adjustment of NUEDEXTA is not required in patients with mild to moderate renal impairment [*see Clinical Pharmacology (12.3)*]. The pharmacokinetics of NUEDEXTA have not been evaluated in patients with severe renal impairment; however, increases in dextromethorphan and/or quinidine levels are likely to be observed.

8.7 Hepatic Impairment

Dose adjustment of NUEDEXTA is not required in patients with mild to moderate hepatic impairment. The pharmacokinetics of NUEDEXTA have not been evaluated in patients with severe hepatic impairment; however, increases in dextromethorphan and/or quinidine levels are likely to be observed.

9 DRUG ABUSE AND DEPENDENCE

NUEDEXTA is a low-affinity uncompetitive NMDA antagonist and sigma-1 receptor agonist that has not been systematically studied in animals or humans for its potential for abuse, tolerance, or physical dependence. However, NUEDEXTA is a combination product containing dextromethorphan and quinidine, and cases of dextromethorphan abuse have been reported, predominantly in adolescents.

While clinical trials did not reveal drug-seeking behavior, these observations were not systematic and it is not possible to predict on the basis of this experience the extent to which NUEDEXTA will be misused, diverted, and/or abused once marketed. Therefore, patients with a history of drug abuse should be observed closely for signs of NUEDEXTA misuse or abuse (e.g. development of tolerance, increases in dose, drug-seeking behavior).

10 OVERDOSAGE

Evaluation and treatment of NUEDEXTA overdose is based on experience with the individual components, dextromethorphan and quinidine. Metabolism of the dextromethorphan component of NUEDEXTA is inhibited by the quinidine component, such that adverse effects of overdose due to NUEDEXTA might be more severe or more persistent compared to overdose of dextromethorphan alone.

During development of NUEDEXTA, dose combinations of dextromethorphan/quinidine containing up to 6-times higher dextromethorphan dose and 12-times higher quinidine dose were studied. The most common adverse events were mild to moderate nausea, dizziness, and headache.

The most important adverse effects of acute quinidine overdose are ventricular arrhythmias and hypotension. Other signs and symptoms of overdose may include vomiting, diarrhea, tinnitus, high-frequency hearing loss, vertigo, blurred vision, diplopia, photophobia, headache, confusion, and delirium.

While therapeutic doses of quinidine for treatment of cardiac arrhythmia or malaria are generally 10-fold, or more, higher than the dose of quinidine in NUEDEXTA, potentially fatal cardiac arrhythmia, including torsades de pointes, can occur at quinidine exposures that are possible from NUEDEXTA overdose.

Adverse effects of dextromethorphan overdose include nausea, vomiting, stupor, coma, respiratory depression, seizures, tachycardia, hyperexcitability, and toxic psychosis. Other adverse effects include ataxia, nystagmus, dystonia, blurred vision, and changes in muscle reflexes. Dextromethorphan may cause serotonin syndrome, and this risk is increased by overdose, particularly if taken with other serotonergic agents, SSRIs or tricyclic antidepressants.

10.1 Treatment of Overdose

While serum quinidine levels can be measured, electrocardiographic monitoring of the QTc interval is a better predictor of quinidine-induced arrhythmia. Treatment of hemodynamically unstable polymorphic ventricular tachycardia (including torsades de pointes) is either immediate cardioversion or, if a cardiac pacemaker is in place or immediately available, immediate overdrive pacing. After pacing or cardioversion, further management must be guided by the length of the QTc interval. Factors contributing to QTc prolongation (especially hypokalemia and hypomagnesemia) should be sought out and (if

possible) aggressively corrected. Prevention of recurrent torsades de pointes may require sustained overdrive pacing or the cautious administration of isoproterenol (30-150 ng/kg/min).

Because of the theoretical possibility of QT-prolonging effects that might be additive to those of quinidine, other antiarrhythmics with Class I (procainamide) or Class III activities should (if possible) be avoided.

If the post-cardioversion QTc interval is prolonged, then the pre-cardioversion polymorphic ventricular tachyarrhythmia was (by definition) torsades de pointes. In this case, class Ib antiarrhythmics like lidocaine are unlikely to be of value, and other Class I and Class III antiarrhythmics are likely to exacerbate the situation.

Quinidine-induced hypotension that is not due to an arrhythmia is likely to be a consequence of quinidine-related α -blockade and vasorelaxation. Treatment of hypotension should be directed at symptomatic and supportive measures. Repletion of central volume (Trendelenburg positioning, saline infusion) may be sufficient therapy; other interventions reported to have been beneficial in this setting are those that increase peripheral vascular resistance, including α -agonist catecholamines (norepinephrine).

Quinidine:

Adequate studies of orally administered activated charcoal in human overdoses of quinidine have not been reported, but there are animal data showing significant enhancement of systemic elimination following this intervention, and there is at least one human case report in which the elimination half-life of quinidine in the serum was apparently shortened by repeated gastric lavage. Activated charcoal should be avoided if an ileus is present; the conventional dose is 1 gram/kg, administered every 2 to 6 hours as a slurry with 8 mL/kg of tap water. Although renal elimination of quinidine might theoretically be accelerated by maneuvers to acidify the urine, such maneuvers are potentially hazardous and of no demonstrated benefit. Quinidine is not usefully removed from the circulation by dialysis. Following quinidine overdose, drugs that delay elimination of quinidine (cimetidine, carbonic anhydrase inhibitors, thiazide diuretics) should be withdrawn unless absolutely required.

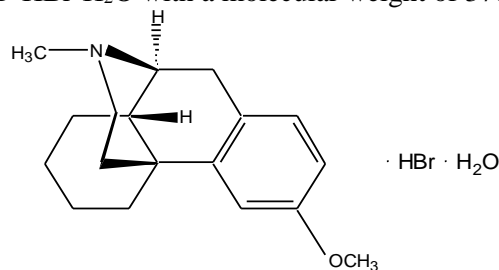
Dextromethorphan:

Treatment of dextromethorphan overdosage should be directed at symptomatic and supportive measures.

11 DESCRIPTION

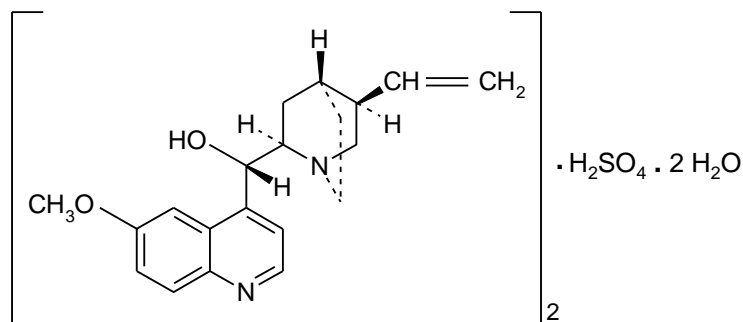
NUEDEXTA is an oral formulation of dextromethorphan hydrobromide USP and quinidine sulfate USP in a fixed dose combination.

Dextromethorphan hydrobromide is the pharmacologically active ingredient of NUEDEXTA that acts on the central nervous system (CNS). The chemical name is dextromethorphan hydrobromide: morphinan, 3-methoxy-17-methyl-, (9 α , 13 α , 14 α), hydrobromide monohydrate. Dextromethorphan hydrobromide has the empirical formula $C_{18}H_{25}NO \cdot HBr \cdot H_2O$ with a molecular weight of 370.33. The structural formula is:



Quinidine sulfate is a specific inhibitor of CYP2D6-dependent oxidative metabolism used in NUEDEXTA to increase the systemic bioavailability of dextromethorphan. The chemical name is

quinidine sulfate: cinchonan-9-ol, 6'-methoxy-, (9S) sulfate (2:1), (salt), dihydrate. Quinidine sulfate dihydrate has the empirical formula of $(C_{20}H_{24}N_2O_2)_2 \cdot H_2SO_4 \cdot 2H_2O$ with a molecular weight of 782.96. The structural formula is:



The combination product, NUEDEXTA, is a white to off-white powder. NUEDEXTA is available for oral use as NUEDEXTA which contains 20 mg dextromethorphan hydrobromide and 10 mg quinidine sulfate. The active ingredients are dextromethorphan hydrobromide monohydrate USP and quinidine sulfate dihydrate USP. Inactive ingredients in the capsule are croscarmellose sodium NF, microcrystalline cellulose NF, colloidal silicon dioxide NF, lactose monohydrate NF, and magnesium stearate NF.

12 CLINICAL PHARMACOLOGY

12.1 Mechanism of Action

Dextromethorphan (DM) is a sigma-1 receptor agonist and an uncompetitive NMDA receptor antagonist. Quinidine increases plasma levels of dextromethorphan by competitively inhibiting cytochrome P450 2D6, which catalyzes a major biotransformation pathway for dextromethorphan. The mechanism by which dextromethorphan exerts therapeutic effects in patients with pseudobulbar affect is unknown.

12.2 Pharmacodynamics

Cardiac Electrophysiology

The effect of dextromethorphan 30 mg/quinidine 10 mg (for 7 doses) on QTc prolongation was evaluated in a randomized, double-blind (except for moxifloxacin), placebo- and positive-controlled (400 mg moxifloxacin) crossover thorough QT study in 50 fasted normal healthy men and women with CYP2D6 extensive metabolizer (EM) genotype. Mean changes in QTcF were 6.8 ms for dextromethorphan 30 mg/quinidine 10 mg and 9.1 ms for the reference positive control (moxifloxacin). The maximum mean (95% upper confidence bound) difference from placebo after baseline correction was 10.2 (12.6) ms. This test dose is adequate to represent the steady state exposure in patients with CYP2D6 extensive metabolizer phenotype.

The effects of supratherapeutic doses of dextromethorphan/quinidine (30 mg/30mg and 60mg/60mg, for 7 doses) on QTc prolongation was evaluated in a randomized, placebo-controlled, double-blind, crossover design with an additional open-label positive control (400-mg moxifloxacin) arm in 36 healthy volunteers. The maximum mean (95% upper confidence bound) differences from placebo after baseline-correction were 10.2 (14.6) and 18.4 (22.7) ms following dextromethorphan/quinidine doses of 30 mg/30 mg and 60/60 mg, respectively. The supratherapeutic doses are adequate to represent exposure increases due to drug-drug interactions and organ dysfunctions.

12.3 Pharmacokinetics

NUEDEXTA contains dextromethorphan and quinidine, both of which are metabolized primarily by liver enzymes. Quinidine's primary pharmacological action in NUEDEXTA is to competitively inhibit the

metabolism of dextromethorphan catalyzed by CYP2D6 in order to increase and prolong plasma concentrations of dextromethorphan [see *Warnings and Precautions (5.4), (5.8), and Clinical Pharmacology (12.5)*]. Studies were conducted with the individual components of NUEDEXTA in healthy subjects to determine single-dose and multiple-dose kinetics of orally administered dextromethorphan in combination with quinidine. The increase in dextromethorphan levels appeared approximately dose proportional when the dextromethorphan dose was increased from 20 mg to 30 mg in the presence of 10 mg of quinidine.

Absorption

Following single and repeated combination doses of dextromethorphan 30 mg/quinidine 10 mg, dextromethorphan/quinidine -treated subjects had an approximately 20-fold increase in dextromethorphan exposure compared to dextromethorphan given without quinidine.

Following repeated doses of dextromethorphan 30 mg/quinidine 10 mg and dextromethorphan 20 mg/quinidine 10 mg (NUEDEXTA), maximal plasma concentrations (C_{max}) of dextromethorphan are reached approximately 3 to 4 hours after dosing and maximal plasma concentrations of quinidine are reached approximately 1 to 2 hours after dosing.

In extensive metabolizers, mean C_{max} and AUC_{0-12} values of dextromethorphan and dextrophan increased as doses of dextromethorphan increased from 20 to 30 mg; mean C_{max} and AUC_{0-12} values of quinidine appeared similar.

The mean plasma C_{max} of quinidine following twice daily co-administration of dextromethorphan 30 mg/quinidine 10 mg in patients with PBA was within 1 to 3% of the concentrations required for antiarrhythmic efficacy (2 to 5 mcg/mL).

NUEDEXTA may be taken without regard to meals as food does not affect the exposure of dextromethorphan and quinidine significantly.

Distribution

After NUEDEXTA administration, protein binding remains essentially the same as that after administration of the individual components; dextromethorphan is approximately 60-70% protein bound and quinidine is approximately 80-89% protein bound.

Metabolism and Excretion

NUEDEXTA is a combination product containing dextromethorphan and quinidine. Dextromethorphan is metabolized by CYP2D6 and quinidine is metabolized by CYP3A4. After dextromethorphan 30 mg/quinidine 30 mg administration in extensive metabolizers, the elimination half-life of dextromethorphan was approximately 13 hours and the elimination half-life of quinidine was approximately 7 hours.

There are several hydroxylated metabolites of quinidine. The major metabolite of quinidine is 3-hydroxyquinidine. The 3-hydroxymetabolite is considered to be at least half as pharmacologically active as quinidine with respect to cardiac effects such as QT prolongation.

When the urine pH is less than 7, about 20% of administered quinidine appears unchanged in the urine, but this fraction drops to as little as 5% when the urine is more alkaline. Renal clearance involves both glomerular filtration and active tubular secretion, moderated by (pH-dependent) tubular reabsorption.

Specific Populations

Geriatric Use

The pharmacokinetics of dextromethorphan/quinidine have not been investigated systematically in elderly subjects (aged > 65 years), although such subjects were included in the clinical program. A population pharmacokinetic analysis of 170 subjects (148 subjects < 65 years old and 22 subjects ≥ 65 years old) administered dextromethorphan 30 mg/quinidine 30 mg revealed similar pharmacokinetics in subjects < 65 years and those ≥ 65 years of age.

Pediatric Use

The pharmacokinetics of NUEDEXTA in pediatric patients have not been studied.

Gender

A population pharmacokinetic analysis based on data from 109 subjects (75 male; 34 female) showed no apparent gender differences in the pharmacokinetics of NUEDEXTA.

Race

A population pharmacokinetic analysis of race with 109 subjects (20 Caucasian; 71 Hispanic; 18 Black) revealed no apparent racial differences in the pharmacokinetics of NUEDEXTA.

Renal Impairment

In a study of a combination dose of dextromethorphan 30 mg/quinidine 30 mg TWICE DAILY in 12 subjects with mild (CLCR 50-80 mL/min) or moderate (CLCR 30-50 mL/min) renal impairment (6 each) compared to 9 healthy subjects (matched in gender, age, and weight range to impaired subjects), subjects showed little difference in quinidine or dextromethorphan pharmacokinetics compared to healthy subjects. Dose adjustment is, therefore, not required in mild or moderate renal impairment. NUEDEXTA has not been studied in patients with severe renal impairment.

Hepatic Impairment

In a study of a combination dose of dextromethorphan 30 mg/quinidine 30 mg TWICE DAILY in 12 subjects with mild or moderate hepatic impairment (as indicated by the Child-Pugh method; 6 each) compared to 9 healthy subjects (matched in gender, age, and weight range to impaired subjects), subjects with moderate hepatic impairment showed similar dextromethorphan AUC and C_{max} and clearance compared to healthy subjects. Mild to moderate hepatic impairment had little effect on quinidine pharmacokinetics. Patients with moderate impairment showed an increased frequency of adverse events. Therefore, dosage adjustment is not required in patients with mild and moderate hepatic impairment, although additional monitoring for adverse reactions should be considered. Quinidine clearance is unaffected by hepatic cirrhosis, although there is an increased volume of distribution that leads to an increase in the elimination half-life. Neither dextromethorphan alone nor NUEDEXTA has been evaluated in patients with severe hepatic impairment.

12.4 Drug-Drug Interactions

The potential for dextromethorphan and quinidine to inhibit or induce cytochrome P450 in vitro were evaluated in human microsomes. Dextromethorphan did not inhibit (< 20% inhibition) any of the tested isoenzymes: CYP1A2, CYP2A6, CYP2B6, CYP2C8, CYP2C9, CYP2C19, CYP2D6, CYP2E1, or CYP3A4 in human liver microsomes at concentrations up to 5 microM. Quinidine did not inhibit (< 30% inhibition) CYP1A2, CYP2A6, CYP2B6, CYP2C8, CYP2C9, CYP2C19, CYP2E1, or CYP3A4 in human microsomes at concentrations up to 5 microM. Quinidine inhibited CYP2D6 with a half maximal inhibitory concentration (IC_{50}) of less than 0.05 microM. Neither dextromethorphan nor quinidine induced CYP1A2, CYP2B6 or CYP3A4 in human hepatocytes at concentrations up to 4.8 microM.

Desipramine (CYP2D6 substrate)

Co-administration of dextromethorphan 30 mg/quinidine 30 mg with the tricyclic antidepressant desipramine, a CYP2D6 substrate, when desipramine was given at a dose of 25 mg once daily in 13 healthy volunteers resulted in an approximately 8-fold increase in steady state desipramine exposure (C_{min}) compared to desipramine given alone. Therefore, concomitant administration of NUEDEXTA and drugs undergoing CYP2D6 metabolism should be evaluated for appropriate dose adjustment or alternative medication if the concomitant medication depends primarily on CYP2D6 metabolism and has a narrow therapeutic index, or if it relies on CYP2D6 for conversion to an active species [see *Warnings and Precautions (5.4)*].

Paroxetine (CYP2D6 inhibitor and substrate)

Co-administration of the selective serotonin reuptake inhibitor paroxetine and a higher combination dose of dextromethorphan/quinidine (dextromethorphan 30 mg/quinidine 30 mg) was studied in 27 healthy volunteers. Group 1 (N = 14) received paroxetine 20 mg once daily for 12 days followed by the addition of dextromethorphan 30 mg/quinidine 30 mg twice daily for 8 days. Group 2 (N = 13) received dextromethorphan 30 mg/quinidine 30 mg twice daily for 8 days followed by the addition of paroxetine 20 mg once daily for 12 days. Dextromethorphan exposure (AUC_{0-12}) and C_{max} increased by 1.5 fold and 1.4 fold, respectively, and quinidine exposure (AUC_{0-12}) and C_{max} increased by 1.4 fold and 1.3 fold, respectively, and dextrophan exposure (AUC_{0-12}) and C_{max} decreased by 14% and 18%, respectively, and paroxetine exposure (AUC_{0-24}) and C_{max} increased by 2.3 fold and 2.0 fold, respectively, when paroxetine was added to the combination dose of dextromethorphan/quinidine at steady state (Group 2).

When the combination dose of dextromethorphan/quinidine was added to paroxetine at steady state (Group 1), paroxetine exposure (AUC_{0-24}) and C_{max} increased by 1.7 fold and 1.5 fold, respectively, while dextromethorphan and quinidine exposure did not change significantly and dextrophan exposure (AUC_{0-12}) and C_{max} decreased by 34% and 33%, respectively.

Based on these results, when NUEDEXTA is prescribed with drugs such as paroxetine that inhibit or are extensively metabolized by CYP2D6, consideration should be given to initiating treatment with a lower dose. The dose of paroxetine can then be adjusted based on clinical response; however, dosage above 35 mg/day is not recommended [see *Warnings and Precautions (5.4)*].

NMDA receptor antagonists (memantine)

A drug interaction study was conducted between a higher combination dose of dextromethorphan/quinidine (dextromethorphan 30 mg/quinidine 30 mg) and memantine 20 mg/day to investigate the pharmacokinetic and pharmacodynamic interactions in 52 healthy subjects. Both dextromethorphan and memantine are antagonists of the *N*-methyl-D-aspartate (NMDA) receptor, which could theoretically result in an additive effect at NMDA receptors and potentially an increased incidence of adverse events. There was no significant difference in the plasma concentrations of dextromethorphan and dextrophan before and after the administration of memantine. Plasma concentrations of quinidine increased 20-30% when memantine was added to dextromethorphan 30 mg/quinidine 30 mg.

12.5 Pharmacogenomics

The quinidine component of NUEDEXTA is intended to inhibit CYP2D6 so that higher exposure to dextromethorphan can be achieved compared to when dextromethorphan is given alone. Approximately 7-10% of Caucasians and 3-8% of African Americans generally lack the capacity to metabolize CYP2D6 substrates and are classified as PMs. The quinidine component of NUEDEXTA is not expected to contribute to the effectiveness of NUEDEXTA in PMs, but adverse events of the quinidine are still possible. In those patients who may be at risk of significant toxicity due to quinidine, genotyping to determine if they are PMs should be considered prior to making the decision to treat with NUEDEXTA [see *Warnings and Precautions (5.4), (5.8), and Clinical Pharmacology (12.3)*].

13 NONCLINICAL TOXICOLOGY

13.1 Carcinogenesis, Mutagenesis, Impairment of Fertility

Carcinogenesis

In a 26-week carcinogenicity study in the Tg.rasH2 transgenic mouse, dextromethorphan and quinidine, alone and in combination, at oral doses up to 100/100 mg/kg/day did not show any evidence of carcinogenic potential.

In a two-year carcinogenicity study in rats, dextromethorphan/quinidine were administered at oral doses of 0/0, 5/100, 20/100, 50/100, 50/0, 0/100 mg/kg/day. No biologically significant tumor findings were observed. The highest dose tested (50/100 mg/kg/day) is approximately 12/50 times the recommended human dose (RHD) of 40/20 mg/day on a mg/m² basis.

Mutagenesis

Dextromethorphan/quinidine was negative in an *in vitro* chromosomal aberration assay in human lymphocytes.

Dextromethorphan was negative in *in vitro* (bacterial reverse mutation, chromosomal aberration in human lymphocytes) and *in vivo* (mouse micronucleus) assays.

Quinidine was negative in an *in vitro* bacterial reverse mutation assay and in an *in vivo* mouse micronucleus assay. Quinidine induced chromosomal aberrations in an *in vitro* chromosomal aberration assay in the presence of metabolic activation.

Impairment of fertility

When dextromethorphan/quinidine was administered orally (0/0, 5/100, 15/100, and 50/100 mg/kg/day) to male and female rats prior to and during mating, and continuing to Day 7 of gestation in females, no effect on fertility was observed up to the highest dose tested, which is approximately 12/50 times the RHD on a mg/m² basis.

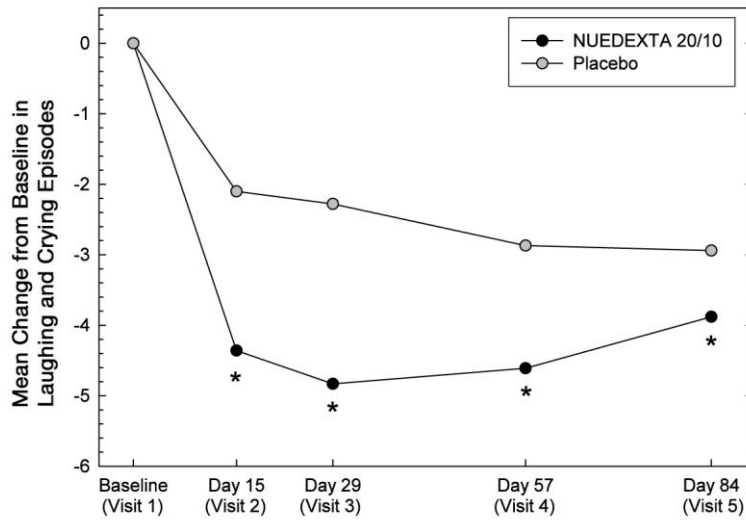
14 CLINICAL STUDIES

The efficacy of NUEDEXTA was demonstrated in one trial in patients with pseudobulbar affect (PBA). These patients had underlying amyotrophic lateral sclerosis (ALS) or multiple sclerosis (MS). Other trials at higher doses (dextromethorphan 30 mg/quinidine 30 mg) provided supportive evidence.

In the NUEDEXTA trial, patients with PBA were randomized to receive NUEDEXTA dextromethorphan 20 mg/quinidine 10 mg, (N=107), dextromethorphan 30 mg/quinidine 10 mg (N=110), or placebo (N=109) for 12 weeks.

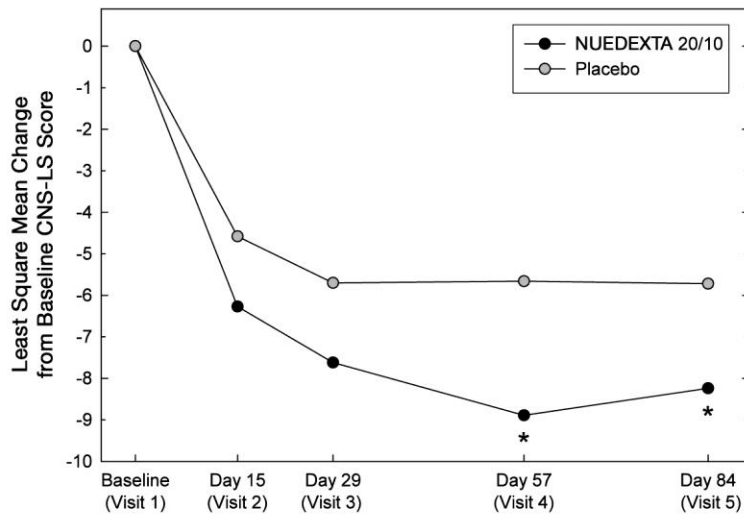
The primary outcome measure, laughing and crying episodes ([Figure 1](#)), was statistically significantly lower in each dextromethorphan/quinidine arm compared to placebo, based on an analysis of the sums of the episode counts over the double-blind phase. The secondary endpoint was the Center for Neurologic Studies Lability Scale (CNS-LS), a seven-item self-report questionnaire with 3 items assessing crying and 4 assessing laughter. CNS-LS was analyzed based on the difference between the mean scores on day 84 and baseline, and was also statistically significantly lower in each dextromethorphan/quinidine arm compared to placebo ([Figure 2](#)). There were no clinically important differences between NUEDEXTA and the dextromethorphan 30 mg/quinidine 10 mg arm.

Figure 1: Mean PBA Episode Rates by Visit



* Statistically significant at $p < 0.05$

Figure 2: Least Square Mean CNS-LS Scores by Visit



* Statistically significant at $p < 0.05$

Two additional studies conducted using a higher dose combination of dextromethorphan/quinidine (dextromethorphan 30 mg/quinidine 30 mg) provided supportive evidence of NUEDEXTA efficacy. The first was a 4 week study in PBA patients with underlying ALS, and the second was a 12 week study in patients with underlying MS. In both studies, the primary outcome measure, CNS-LS, and the secondary outcome measure, laughing and crying episodes, were statistically significantly decreased by the dextromethorphan/quinidine combination.

16 HOW SUPPLIED/STORAGE AND HANDLING

NUEDEXTA is supplied as brick red gelatin capsules imprinted with “DMQ 20-10”. NUEDEXTA is

supplied in the following package configuration:

Package Configuration	Capsule Strength (mg)	NDC Code
Bottles of 60 (30 day supply)	dextromethorphan 20 mg/ quinidine 10 mg	64597-301-60

Storage

Store NUEDEXTA capsules at controlled room temperature, 25°C (77°F); excursions permitted to 15° - 30°C (59° - 86°F) [See USP Controlled Room Temperature].

17 PATIENT COUNSELING INFORMATION

Hypersensitivity

Patients should be advised a hypersensitivity reaction to NUEDEXTA could occur. Patients should be instructed to seek medical attention immediately if they experience symptoms indicative of hypersensitivity after taking NUEDEXTA [see Contraindications (4.2), Warnings and Precautions (5.1)].

Cardiac effects

Patients should be advised to consult their healthcare provider immediately if they feel faint or lose consciousness. Patients should be counseled to inform their healthcare provider if they have any personal or family history of QTc prolongation [see Contraindications (4.4), Warnings and Precautions (5.3) Drug Interactions (7)].

Dizziness

Patients should be advised that NUEDEXTA may cause dizziness. Precautions to reduce the risk of falls should be taken, particularly for patients with motor impairment affecting gait or a history of falls [see Warnings and Precautions (5.5), Adverse Reactions (6.1)].

Drug Interactions

Inform patients that NUEDEXTA increases the risk of adverse drug interactions. Instruct patients to inform their healthcare provider about all the medications that they are taking before taking NUEDEXTA. Before taking any new medications, patients should tell their healthcare provider that they are taking NUEDEXTA [see Drug Interactions (7)].

Dosing Instructions

Instruct patients to take NUEDEXTA exactly as prescribed. Instruct patients not to take more than 2 capsules in a 24-hour period and to make sure that there is an approximate 12-hour interval between doses, and not to take a double dose after they miss a dose [see Dosage and Administration (2.1)].

General

Patients should not share or give NUEDEXTA to others, even if they have the same symptoms, because it may harm them.

Advise patients to contact their healthcare provider if their PBA symptoms persist or worsen.

Advise patients to keep this and all medications out of reach of children and pets.

Marketed by:

Avanir Pharmaceuticals, Inc.
Aliso Viejo, CA 92656
1-855-4NUEDEX (468-3339)

MLR-NUE-US-1530-0721

AVANIR and NUEDEXTA are trademarks or registered trademarks of
Avanir Pharmaceuticals, Inc. in the United States and other countries.
U.S. Patent Nos.: 8,227,484 and 7,659,282
©2010-2021 Avanir Pharmaceuticals, Inc. All rights reserved.